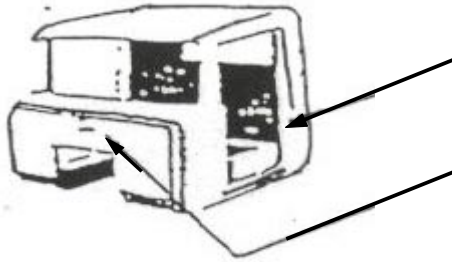
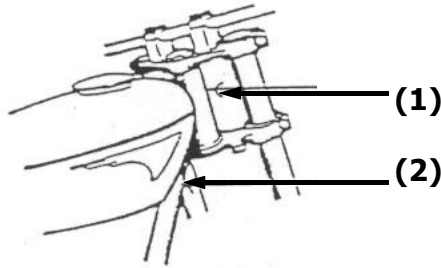


PRIMARY AND ALTERNATE VEHICLE IDENTIFICATION NUMBER (VIN) PLACEMENT LOCATIONS

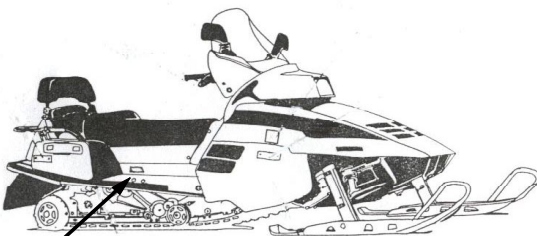
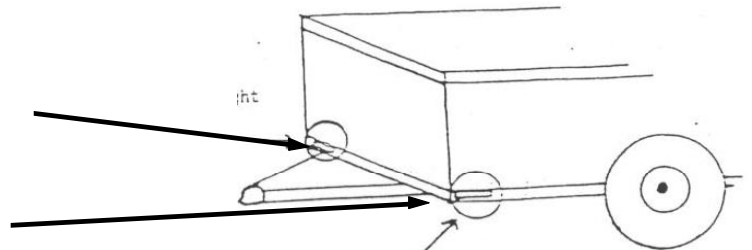


- TRUCKS AND AUTOMOBILES**
- (1) Primary location—Front left plate post
 - (2) Alternative location—Firewall

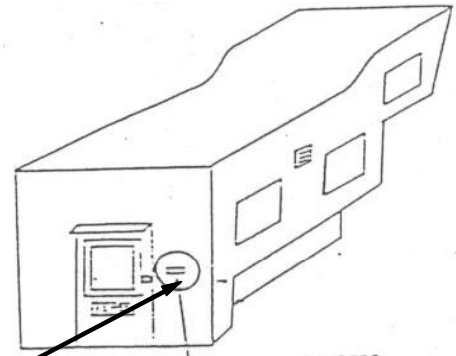


- MOTORCYCLES AND MOPEDS**
- (1) Primary location—Headstock or steering head
 - (2) Alternative location—Frame down tube

- TRAILERS**
- (2) Alternative location—Right front frame rail
 - (1) Primary location—Left frame rail at the front of the vehicle



- SNOWMOBILE**
- (1) Primary location—Right side of snowmobile below seat on the tunnel.
Approximately 3" below the seat and about the middle of the tunnel.
There is no alternative location for snowmobile.



- CAMPERS**
- (1) Primary location—on camper next to door latch.
(Can be on back or side depending upon door location.)
There is no alternative location for campers.